

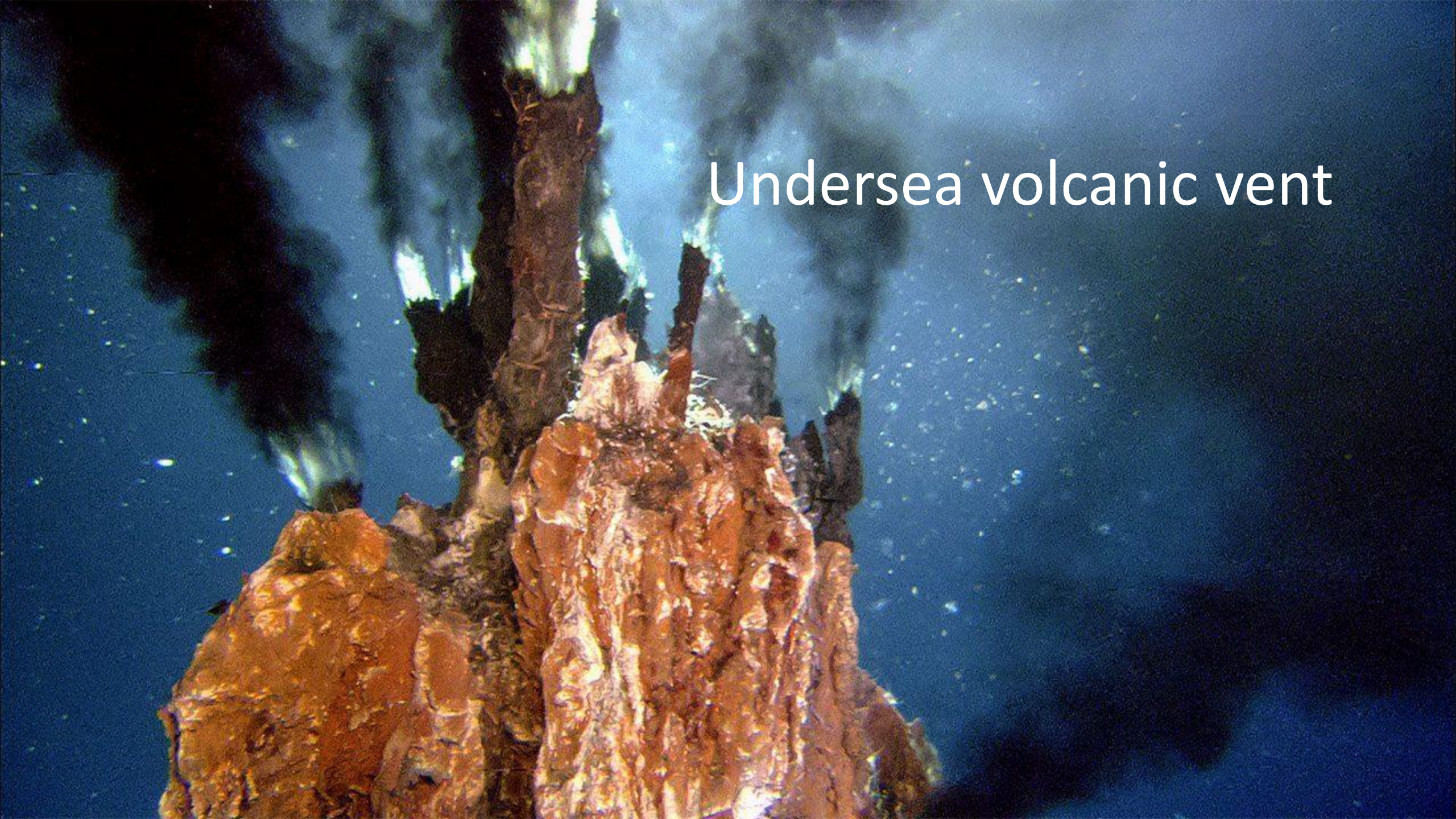
A photograph of a stone archway in a wall. To the left of the arch is a large, circular stone. The archway is dark, and the word "LIFE!" is written in white, bold, sans-serif capital letters inside it. The stone is light-colored and textured.

LIFE!

“Curiosity” on Mars



Undersea volcanic vent





Looking for vents, they had stumbled upon life – lots of it.



Ancient depiction of the Tree of Life

John 10:10 NIV

“The thief comes only to steal and kill and destroy; I have come that they may have life, and have it to the full.”

Mark 15:46 NIV

So Joseph bought some linen cloth, took down the body, wrapped it in the linen, and placed it in a tomb cut out of rock.

John 19:41 NIV

At the place where Jesus was crucified, there was a garden, and in the garden a new tomb, in which no one had ever been put.

Matthew 27:65-66 NIV

“Take a guard,” Pilate answered. “Go, make the tomb as secure as you know how.”

So they went and made the tomb secure by putting a seal on the stone and posting the guard.

Mark 16:4-5 NIV

But when they looked up, they saw that the stone, which was very large, had been rolled away. As they entered the tomb, they saw a young man dressed in a white robe sitting on the right side, and they were alarmed.

Mark 16:6-7 NIV

“Don’t be alarmed,” he said. “You are looking for Jesus the Nazarene, who was crucified. He has risen! He is not here. See the place where they laid him. But go, tell his disciples and Peter, ‘He is going ahead of you into Galilee. There you will see him, just as he told you.’”

Acts 2:23-24 NIV

“This man was handed over to you by God’s deliberate plan and foreknowledge; and you, with the help of wicked men, put him to death by nailing him to the cross.”

Acts 2:23-24 NIV

“But God raised him from the dead, freeing him from the agony of death, *because it was impossible for death to keep its hold on him.*”

Mark 16:8 NIV

Trembling and bewildered, the women went out and fled from the tomb. They said nothing to anyone, because they were afraid.

A photograph of a stone archway in a wall. To the left of the arch is a large, circular stone. The archway is dark, and the word "LIFE!" is written in white, bold, sans-serif capital letters inside it. The stone is light-colored and textured.

LIFE!